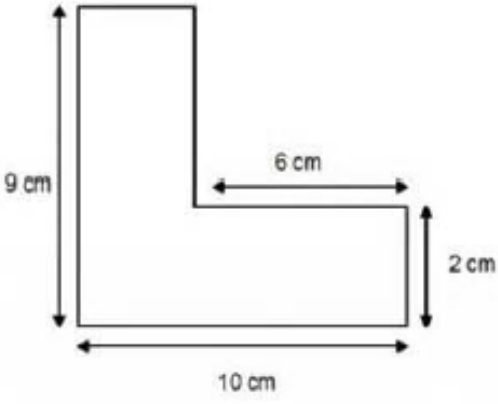


1 (a)

Look at the shape below:



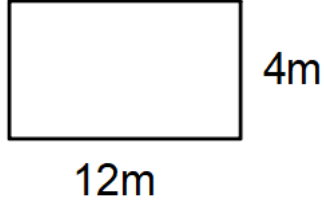
Which is the correct perimeter?

- A) 27cm
- B) 38cm
- C) 31cm

(b) Can you explain the errors for the 2 incorrect answers

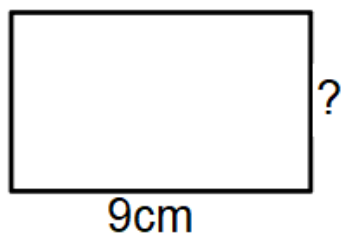
(c) Find the Area of the shape

2 (a) Find the Area and Perimeter of this rectangle

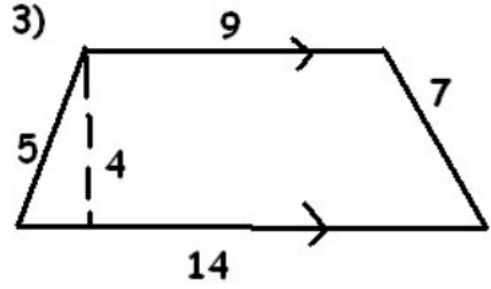
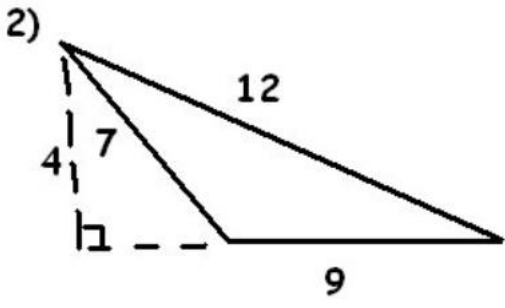
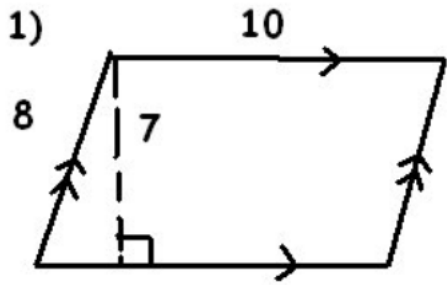


(b) How can you tell that the rectangle is not to scale

3) The area of this rectangle is 27cm² . What is the perimeter?

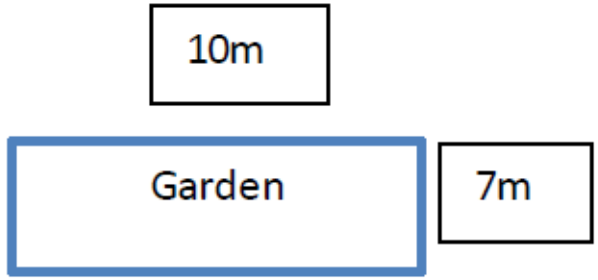


4) *TRICKY* Find the Area and Perimeter of these shapes (measurements are in cm)



5) *DONG NAO JIN*

This is a drawing of David's garden.



David wants to plant seeds in his garden. He has £10. It costs £2 per 5m² to plant seeds. (a) How much of his garden can he plant seeds in? (b) What fraction and percentage of his garden can he plant seeds in?